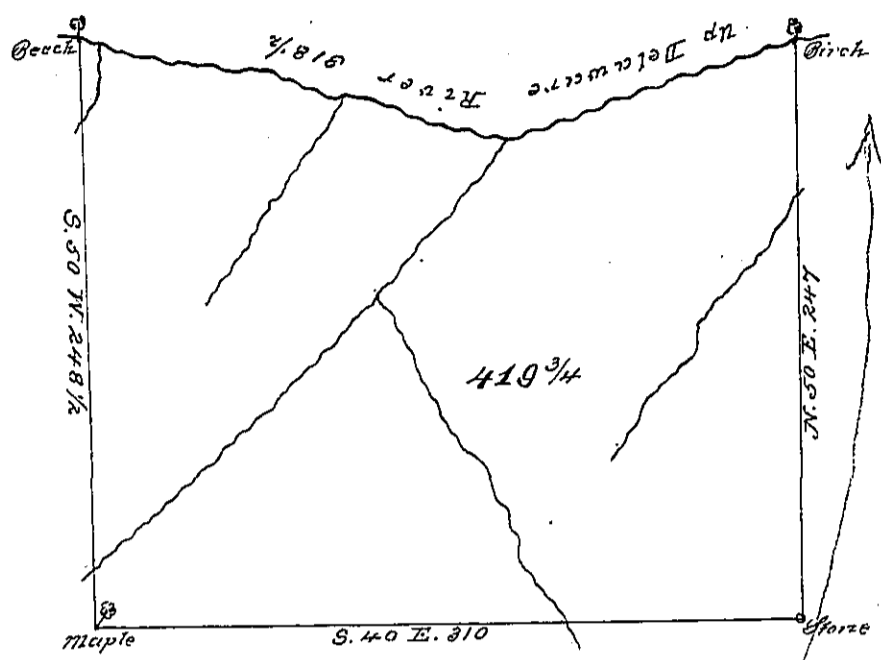


C-95-217

vacant land



vacant land

Bearing and distance
up Delaware River are
1. N. 56 1/2 W. 125
2. N. 20 W. 193 1/2
318 1/2

vacant land

H-115

By Virtue of a Warrant dated the 2^d February 1785. Surveyed the 2^d October 1786 to John Yohu the above described tract of Land situate on Delaware River about half a mile below Nalbert's or Utter's Eddy in Northampton County Containing Four hundred and nineteen acres. three Quarters and the allowance of Six Percent Sea.

J. Geo. Palmer

To John Lukens Esq. S. G.

IN TESTIMONY that the above is a copy of the original remaining on file in the Department of Internal Affairs of Pennsylvania, made conformably to an Act of Assembly approved the 16th day of February, 1833, I have hereunto set my Hand and caused the Seal of said Department to be affixed at Harrisburg, this

Ninth day of *April* 1891

Wm. S. Stewart
Secretary of Internal Affairs